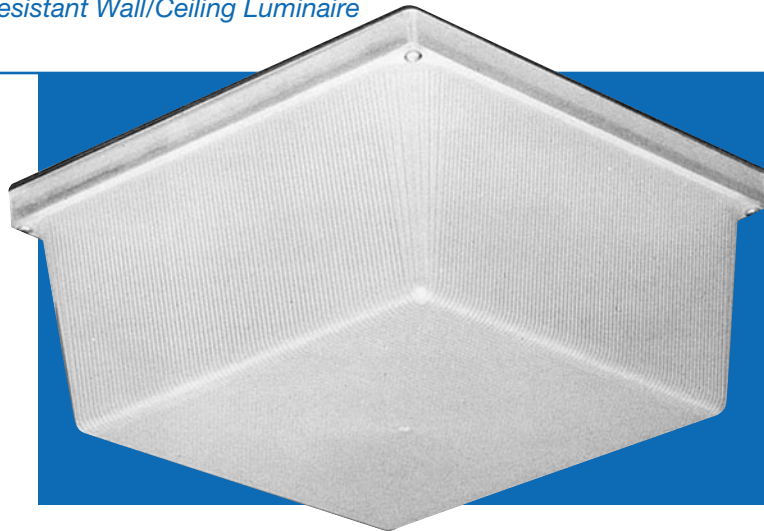


# FLUORESCENT



## 1200 Series *Rust Resistant, Vandal Resistant Wall/Ceiling Luminaire* *Two 42 Watts Maximum*

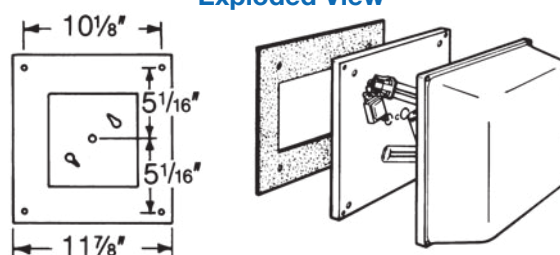
Designed for indoor/outdoor use where efficiency and style are as important as endurance to abuse by environmental elements or vandalism. **Rust resistant.** Engineered with materials offering **high resistance to rust, corrosion, and impact.** Smooth exterior surface for ease of cleaning and rounded corners for added strength and safety. The **polycarbonate** housing is nonconductive, assuring more safety to the end user. Ideally suited for schools, motels, apartments, parking areas and commercial establishments.



### Specifications

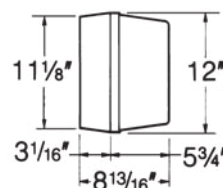
<b>Lens:</b>	Injection molded of UV-stabilized <b>polycarbonate</b> . Average thickness is 1/8". Smooth exterior surface for ease of cleaning and rounded corners for added strength and safety.
<b>Base Plate:</b>	<b>Rust resistant</b> .080" 5052 H-32 tempered marine-grade aluminum.
<b>Housing: (optional)</b>	Injection molded of UV-stabilized reinforced white or bronze <b>polycarbonate</b> . Rear knockout for supply wire. Available with up to four threaded connections and plugs suitable for 1/2" conduit. (Mounting hardware not included.)
<b>Gasket: (optional)</b>	Closed-cell neoprene rubber in 1/8" thickness creates a tight seal against moisture and contaminants.
<b>Socket:</b>	Four-pin and two-pin type. Leads insulated for 105°C.
<b>Lamp:</b>	High-efficiency PL, QD, PLT, and PLC lamps offer up to 10 times longer life and 70% energy savings over incandescent lamps.
<b>Ballast:</b>	Self-start preheat Normal Power Factor 120V or High Power Factor for 120V- 277V. 18W, 26W, 32W, and 42W are standard 120V through 277V, 50/60Hz world class universal electronic, 0°F or better starting temperature.
<b>Hardware:</b>	Four stainless steel 8-32 phillips truss head screws or tamperproof screws attach lens to base plate. Mounting hardware included.

### Exploded View

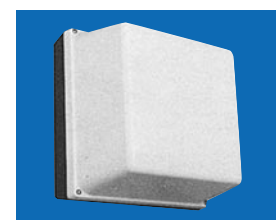


### Dimensions

(4) 1/2" Threaded Conduit Connections (optional)



With Optional Housing



Shown With Optional Housing

### ETL-US and ETL-C Listed For Wet Locations

All polycarbonate components meet Underwriters Laboratories 746C tests for polymeric material and carry a flammability rating of 94HB or better on lenses and the superior 94-5V rating on housings.

Luminaire Type \_\_\_\_\_  
Catalog Number \_\_\_\_\_  
Job Name \_\_\_\_\_  
Approval \_\_\_\_\_



**SBA QUALIFIED  
SMALL BUSINESS MANUFACTURER**

**TAA COMPLIANT**  
TRADE AGREEMENT ACT COMPLIANT

**WF Harris Lighting, Inc.™**

**Innovative Lighting Designs Since 1970**

P.O. Box 5023, Monroe, NC 28111-5023, USA  
704.283.7477 (HEADQUARTERS) • 800.842.9345 (TOLL FREE)  
e-mail: customerservice@wfharris.com  
www.wfharrislighting.com

# FLUORESCENT

Ordering Information (Fill In Blanks For Complete Catalog Number)

1200 Model	CP Lens Color	HW Housing Color	2-13 PL Watts/Lamp	NPF Power Factor	120 Volts	TPS Options	CT Conduit Connection
Model	Lens Color	Housing Color	Watts/Lamp	Power Factor	Volts	Options	Conduit Connections
<b>1200</b>	<b>CP</b> -Clear Prismatic <b>OW</b> -Opal White	<b>HW</b> -White <b>HB</b> -Bronze	<b>2-13 PL</b> <sup>4</sup> <b>2-13 QD</b> <b>2-26 PLC</b> <sup>*5</sup> <b>2-18 PLT</b> <sup>*5</sup> <b>2-26 PLT</b> <sup>*5</sup> <b>2-32 PLT</b> <sup>*3,5</sup> <b>2-42 PLT</b> <sup>*3,5</sup>	<b>NPF</b> <b>HPF</b>	<b>120</b> <b>120-277*</b>	<b>LP</b> - Lamp <b>PC120</b> - Photo Control for 120V <sup>2</sup> <b>PC277</b> - Photo Control for 208V, 240V, 277V (Specify Voltage) <b>FS</b> -Fuse and Holder <b>SW/B</b> -On/Off Switch and Boot <sup>1,2</sup> <b>TPS</b> -Tamperproof Screws <b>SR</b> -Photo Control Shield - Round <sup>2</sup> <b>SRH</b> -Photo Control Shield - Half Round <sup>2</sup> <b>PS-BZ</b> -Painted Bronze 4 sides on Clear Lens <b>GCO-HD</b> -Heavy Duty Grounded Convenience Outlet <sup>1,2</sup> <b>GRAPHICS</b> -Numbers, Letters, Symbols, Logos <b>12H</b> __-Housing (Specify Color) <b>W</b> -White <b>B</b> -Bronze	<b>CRS</b> -Right Side <b>CLS</b> -Left Side <b>CT</b> -Top <b>CB</b> -Bottom <b>C4</b> -All Four Sides  (Positions Based on Facing Luminaire)

## Accessories

(Order Separately)

**TPT**-Tamperproof Screwdriver



<sup>1</sup> Dry Locations Only

<sup>2</sup> Requires 12H Housing

<sup>3</sup> Includes 12H Housing

<sup>4</sup> Available NPF 120 Only

<sup>5</sup> Available HPF 120-277V Only

\*Electronic

## Fluorescent Lamp Performance

	2-13 Watt Twin PL	2-26 Watt PLC	2-18 Watt PLT	2-26 Watt PLT	2-32 Watt PLT	2-42 Watt PLT
Input Watts	34W	52W	36W	52 W	64W	84W
Lumen Output	1,650	3,600	2,400	3,600	4,800	6,400
Lamp Life (Hours)	10,000	10,000	110,000	10,000	10,000	10,000
Min. Starting Temperature	32°F	0°F	0°F	0°F	0°F	0°F

## Conversion Tables

Lamp	Lamp Conversion Factor (LCF)	Mounting Height	Height Conversion Factor (HCF)
<b>Ceiling Mount</b>			
2-13 PL	0.90	6'	1.77
		8'	1.00
<b>Wall Mount</b>			
2-26 PLC	1.50	10'	0.64
2-18 PLT	1.00	12'	0.45
2-26 PLT	1.50		
2-32 PLT	2.00		
2-42 PLT	2.66		

## Using Conversion Tables

TO ADJUST FOOTCANDLES (FC) SHOWN IN DIAGRAMS AT LEFT, USE ONE OF THE FOLLOWING FORMULAS WITH LAMP CONVERSION FACTOR (LCF) AND HEIGHT CONVERSION FACTOR (HCF):

$FC \times LCF = FC$  with alternate lamp

$FC \times HCF = FC$  at alternate height

$FC \times LCF \times HCF = FC$  with alternate lamp at alternate height

Specifications Subject to Change Without Notice.

Luminaire is Warranted to be Free of Defects in Materials and Workmanship for One Year From Invoice Date.

**LENS AND HOUSING CARRY A LIFETIME WARRANTY.**



**SBA QUALIFIED  
SMALL BUSINESS MANUFACTURER**

**TAA COMPLIANT**  
TRADE AGREEMENT ACT COMPLIANT

**W.F. Harris Lighting, Inc.™**

**Innovative Lighting Designs Since 1970**

P.O. Box 5023, Monroe, NC 28111-5023, USA

704.283.7477 (HEADQUARTERS) • 800.842.9345 (TOLL FREE)

e-mail: customerservice@wfharris.com

www.wfharrislighting.com

Printed in USA

Form 1507

5/19

*"W. F. Harris Lighting Will Not Sacrifice Quality for the Sake of Price."*